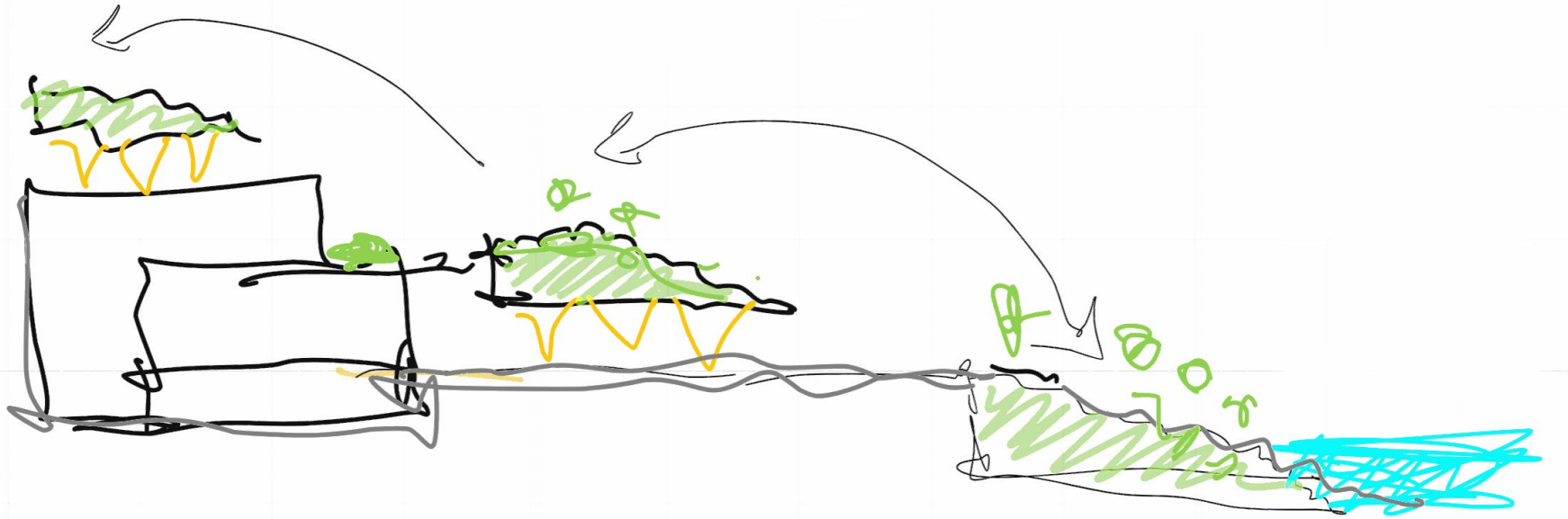


# New Central Library

## Town of Oakville

April 16, 2026



## Agenda

1. Engagement Overview
2. Concept
3. Landscape Design
4. Floor Plans
5. Exterior Views
6. Overall Schedule



# Engagement Summary

Engagement activities undertaken to date in Phase 1

## Public engagement

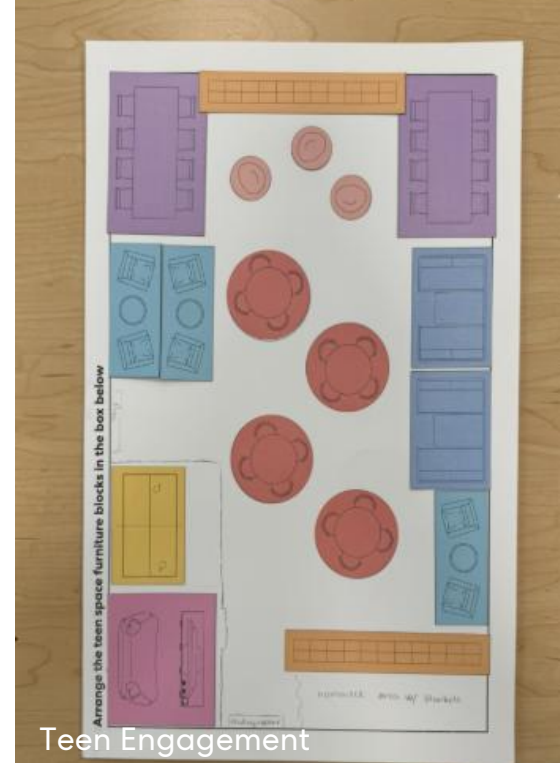
- Online survey
- Open house
- Heritage to Horizon Panel

## Stakeholder and community engagement

- OPL staff
- Donors
- Community organizations
- Youth

## Indigenous engagement

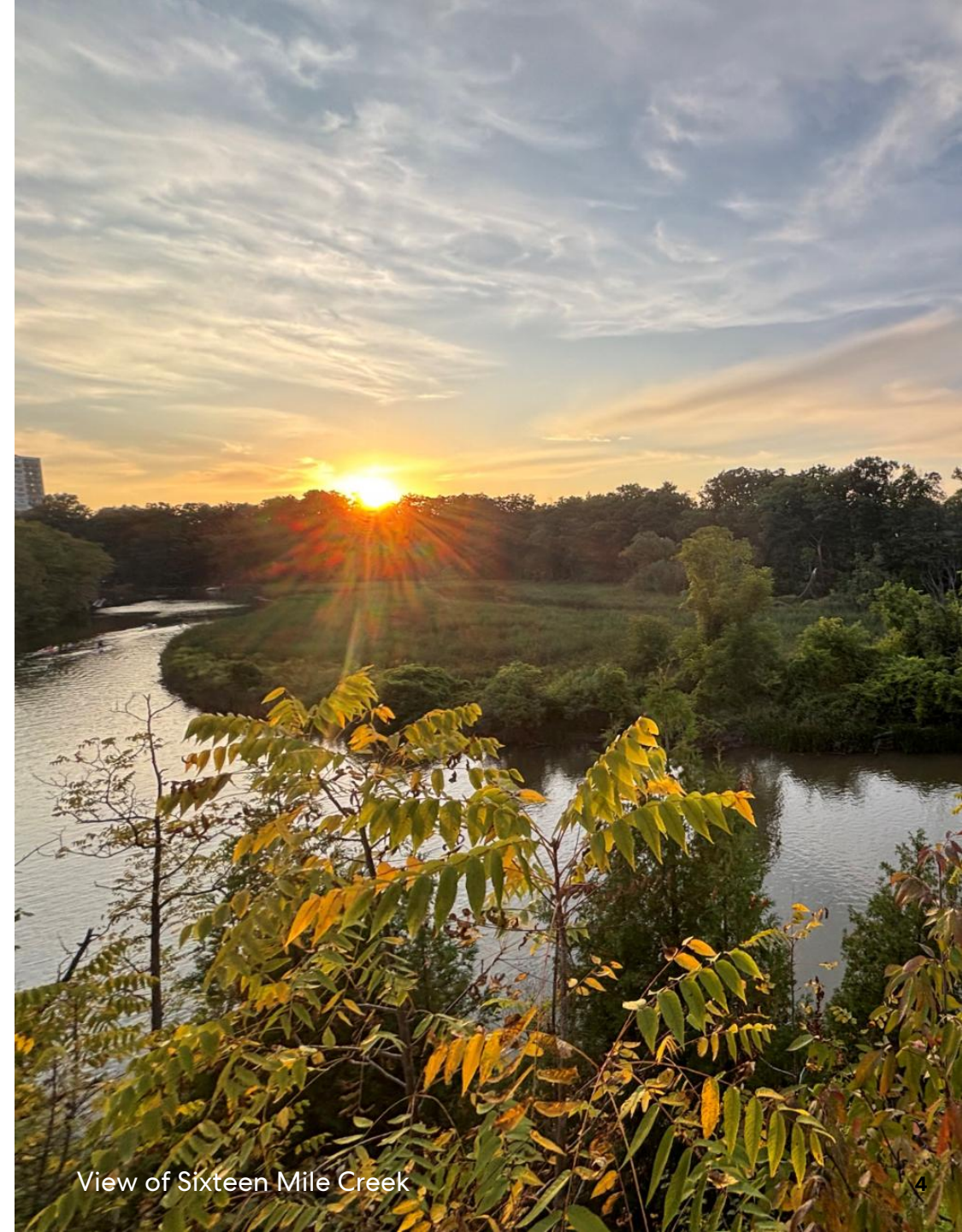
The Indigenous engagement process is ongoing and will be summarized in an Indigenous engagement summary report.



## Indigenous Engagement Summary

### What We Heard

1. Accessible indoor and outdoor gather spaces that follow indigenous protocols, support Indigenous knowledge sharing and create space for healing.
2. Connection to Sixteen Mile Creek – fostering connection to the land and waterways
3. Heritage space that reflects the Indigenous history of Oakville
4. Space for a building host (Elder in Residence) who cares for the space(s) and is available to welcome and orient people – answer questions
5. Space for Indigenous art and live performances
6. Communal space for preparing, cooking and sharing food



View of Sixteen Mile Creek

## Engagement Summary

### What We Heard

7. A landmark building for Downtown Oakville
8. A destination that draws and connects people
9. Views of Sixteen Mile Creek
10. A spectacular children's area
11. Outdoor spaces – large festivals/event to cozy shaded nooks
12. Community space – large events, meeting rooms, work spaces
13. Celebration of Oakville's culture and heritage
14. Technology – reliable internet access, 3D printers and specialized technology

***“Warm, inviting family spaces to encourage stop, stay, play, and read. Chance for families to meet new friends!”***

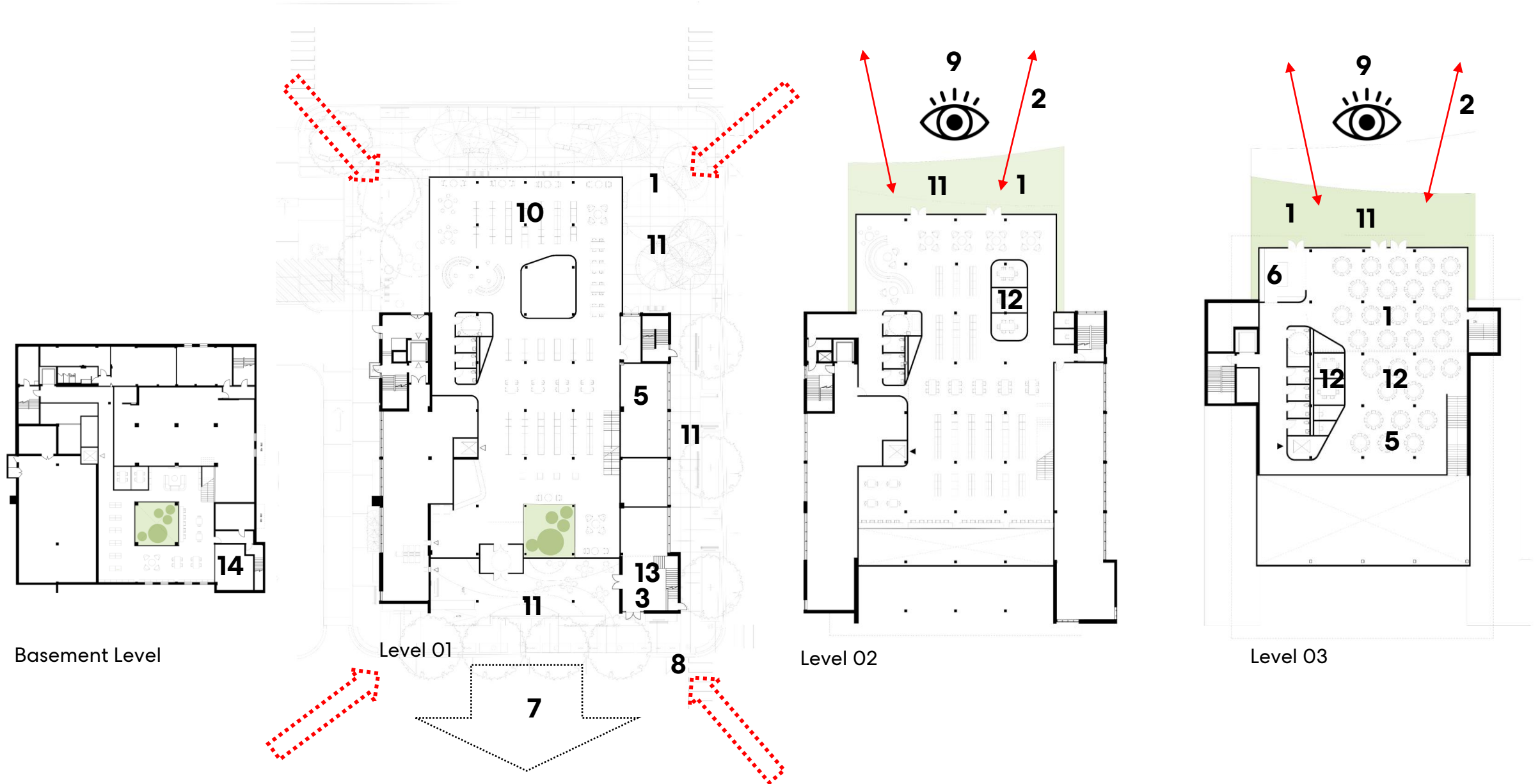
***“Comfortable place to read with a nice view out the window.”***

***“Event space that can be rented for large parties, outdoor terrace, community garden.”***



# Indigenous Engagement Summary

## Considerations for the New Central Branch



## Concept



## **“At the River’s Bend”**

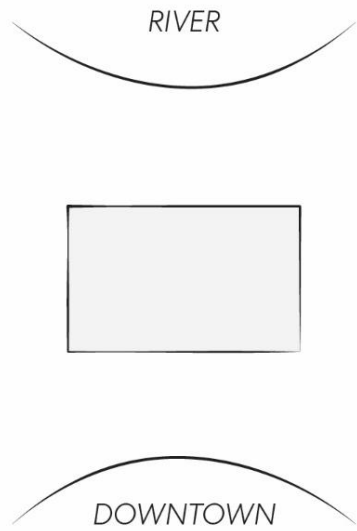
*(The Creek flows through the Post Office)*

The creek has long been a natural conduit for movement, communication, and connection. In parallel, the post office has historically served as a civic anchor, a place where news arrived, stories were exchanged and communities stayed connected.

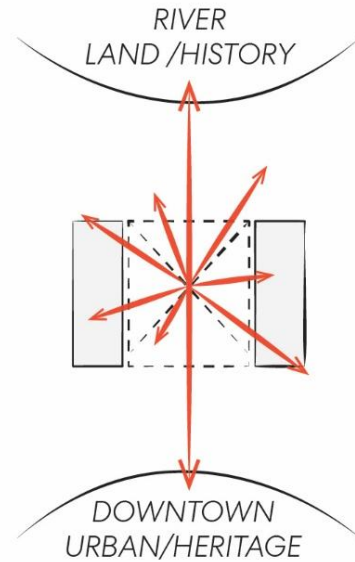
Through integrated landscape and architectural interventions, the library reimagines the meeting of a creek and post office as a shared public realm, where people, space and natural process flow through the site together, reinforcing one another. Along the creek’s banks, the convergence creates space for exchange, gathering and celebration, revitalizing the site as a living network for shared knowledge and community life

## Concept - Shaping Spaces for Gathering and Exchange – A Bend in the River

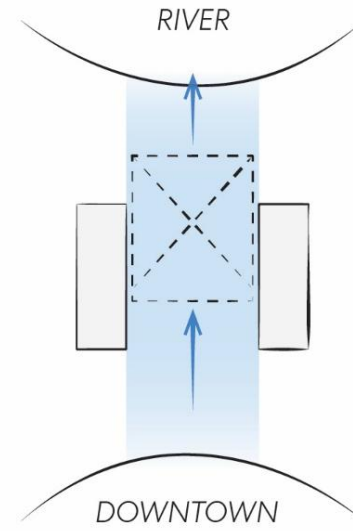
The site is located at a bend in the river - an important location throughout history as a spot to gather and exchange information. As the site transitions from a post office to the new central library, it will continue to serve the community in this way.



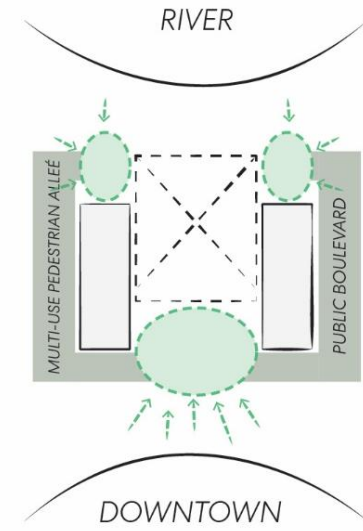
Post office as a piece of history and heritage



Library as a place to share and exchange history and heritage



An intersection of cultures and generations – bridging two perspectives



Marking zones for gathering and exchange

## Concept - Inspiring a Spatial Language



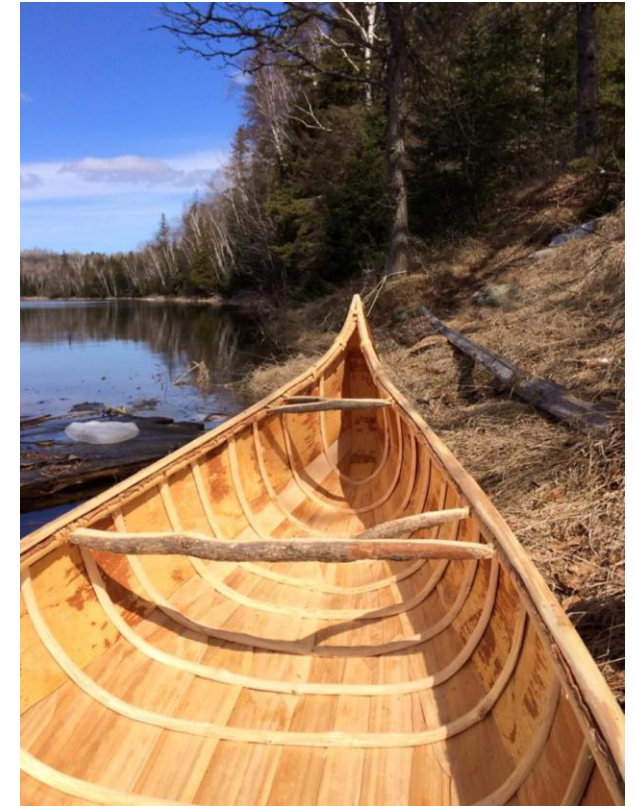
### Fluid Gestures

Water shapes the land, alternately carving and depositing.



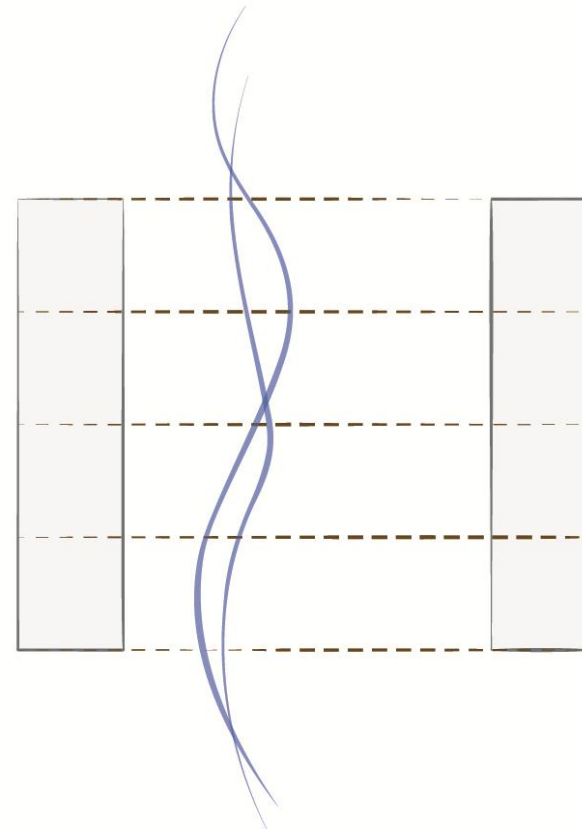
### Vertical Articulations

Grasses, bull rushes, riparian saplings and the fishing weirs of indigenous peoples create places for habitat and species interaction.



**Layered Systems** – The ribs, strapping and outer shell of a canoe echo the structure, bones, muscle fibers and skin of the creatures that inhabit and are shaped by the river.

## Concept - Inspiring a Spatial Language



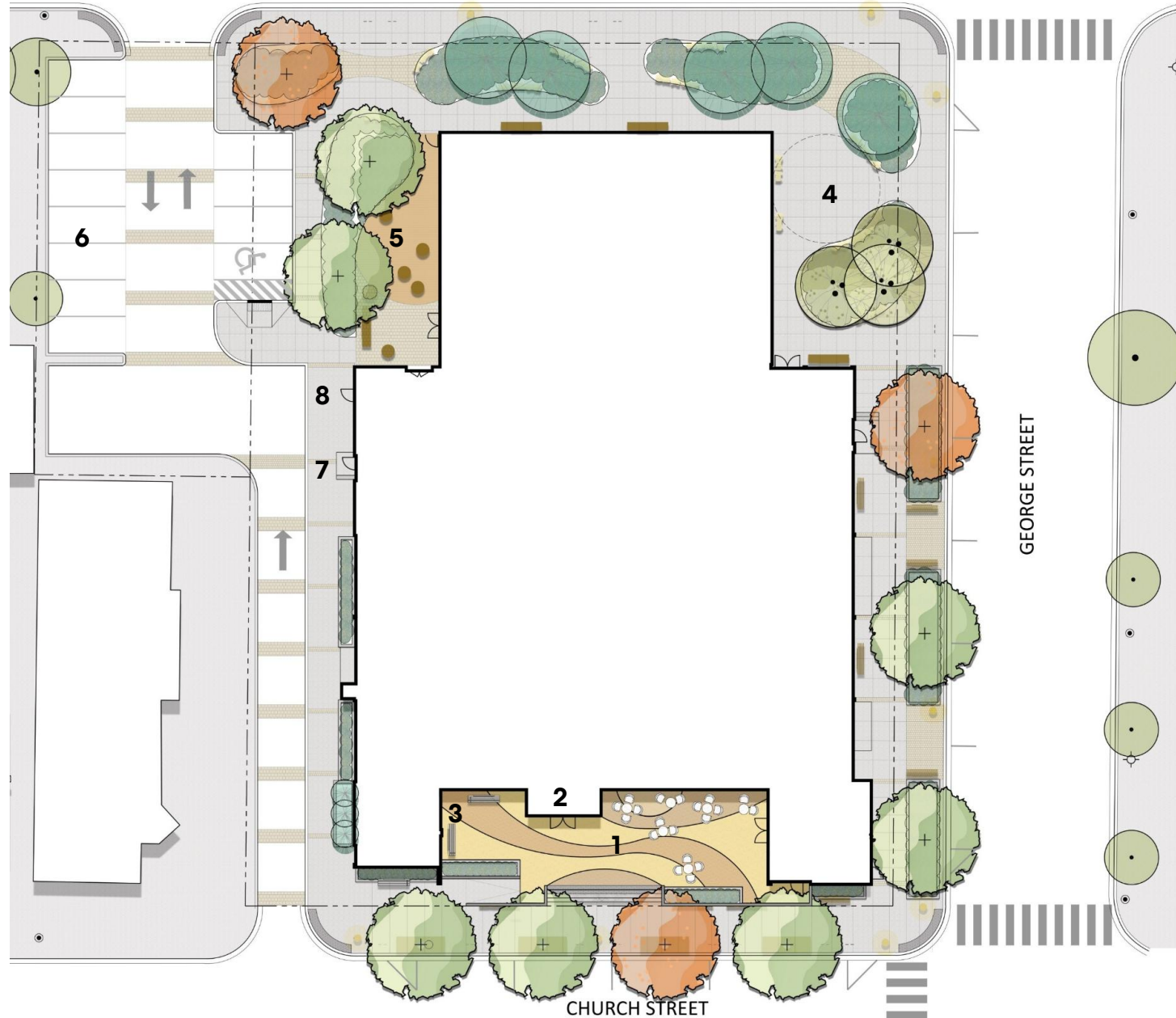
Inspired by the fishing weir, the library uses a series of porous thresholds to gather people and knowledge through movement, flow and pause.

**Concept - Inspiring a Spatial Language**



# Landscape Plan

RANDALL STREET

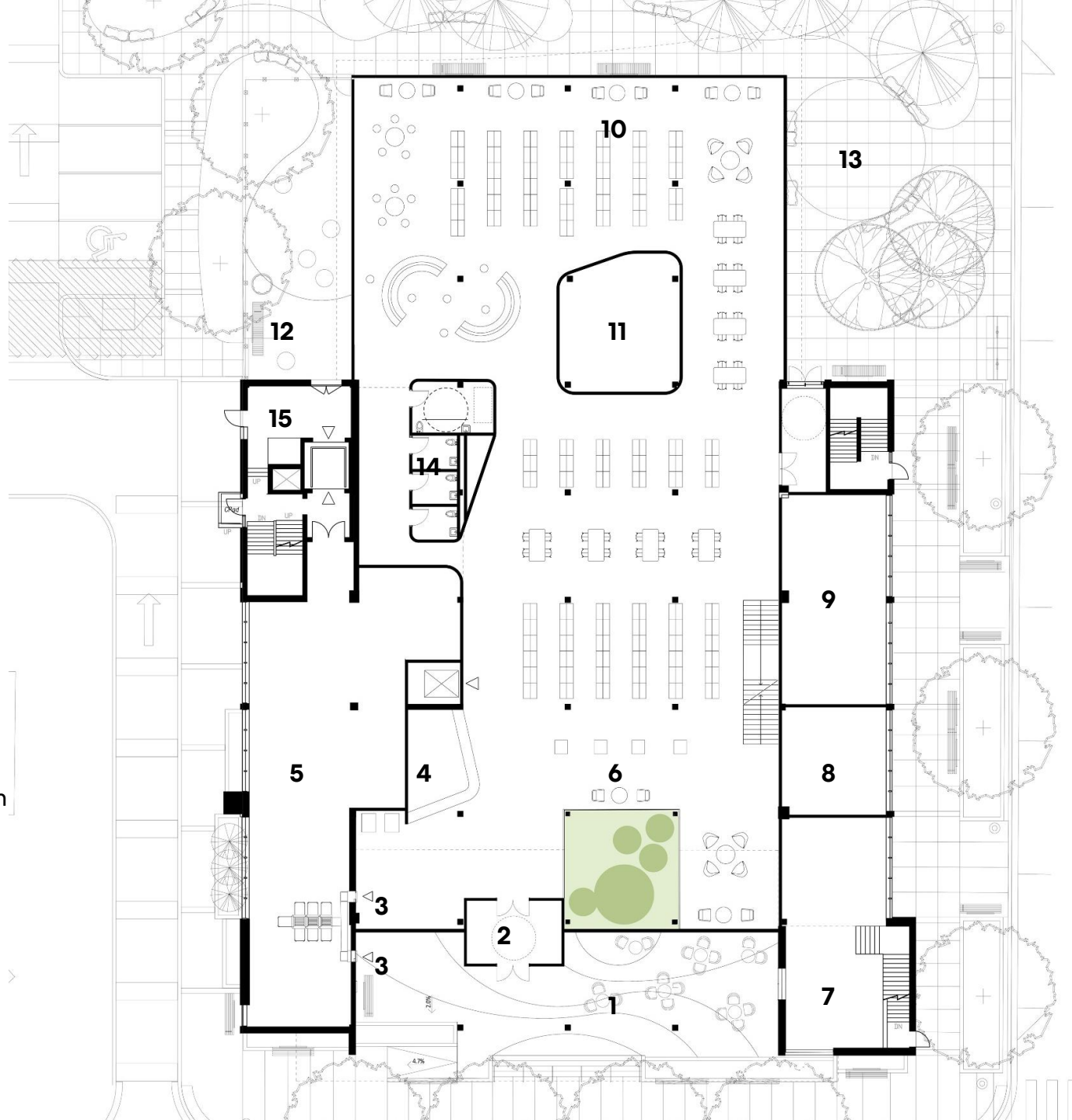


1. Entry Plaza
2. Vestibule
3. Book Drop
4. George Street Plaza
5. Children's Garden
6. Staff Parking
7. Delivery
8. Event Entry (After Hours)



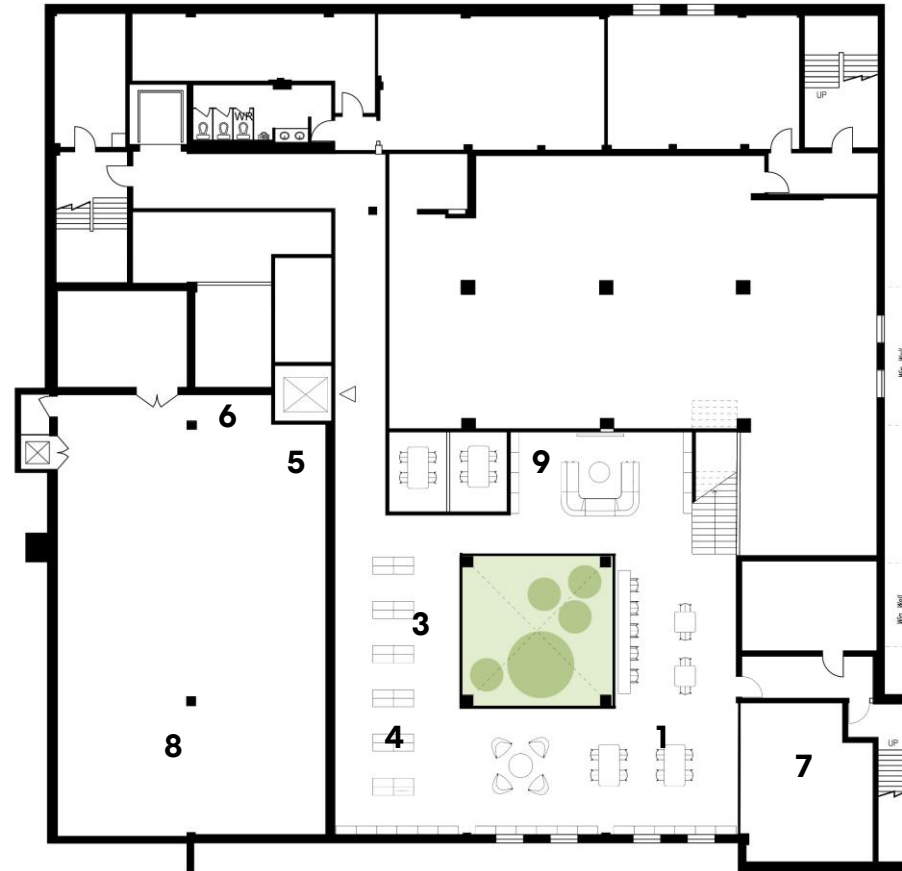
# Floor Plan – Level 01

- 1. Entry Plaza
- 2. Vestibule
- 3. Book Drop
- 4. Service Desk
- 5. Staff
- 6. Living Room
- 7. Local History
- 8. Bookstore
- 9. Program Room
- 10. Children
- 11. Children's Program Room
- 12. Children's Garden
- 13. George Street Plaza
- 14. Washrooms
- 15. Delivery / Event Entry



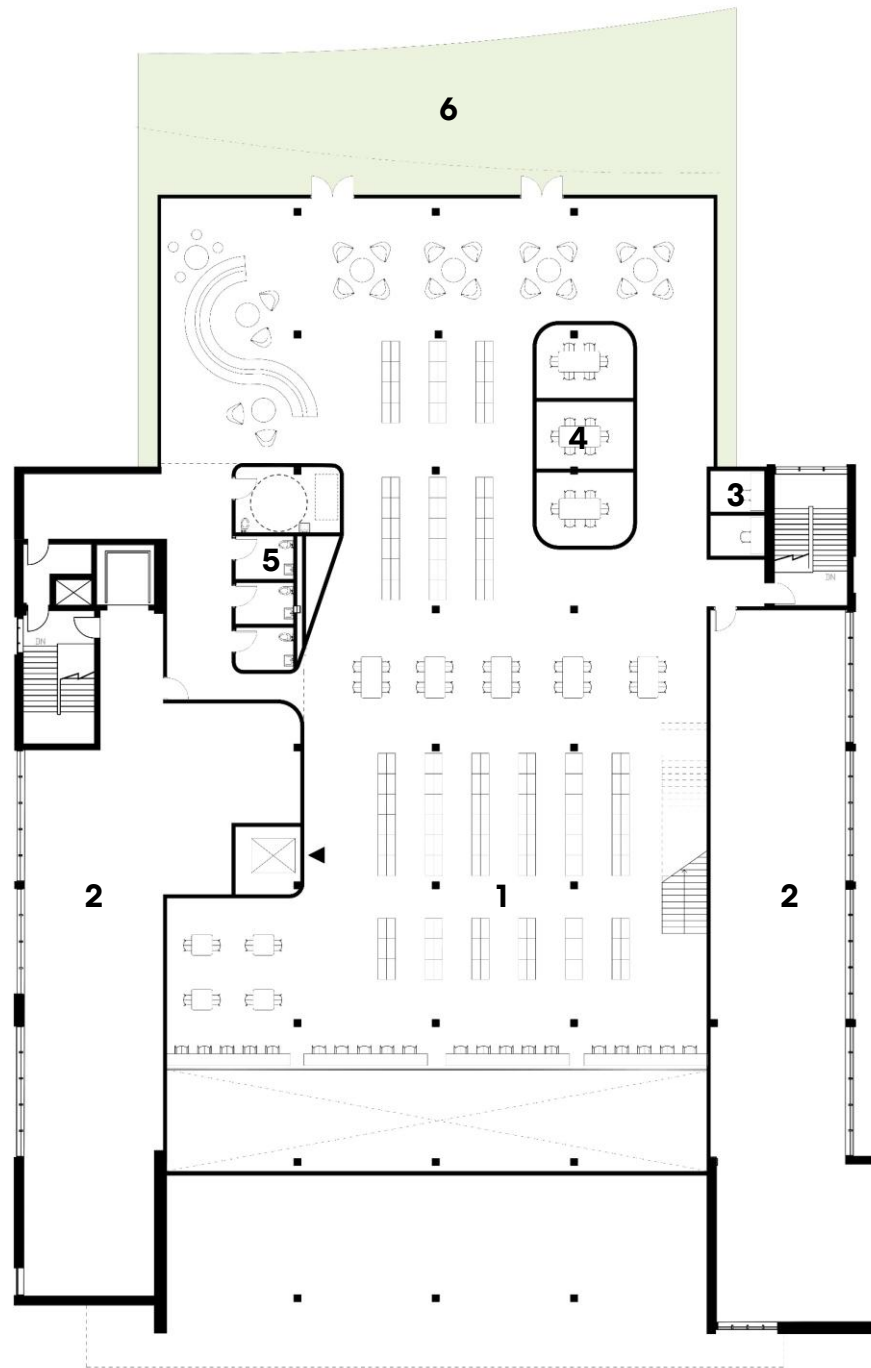
# Floor Plan - Basement

- 1. Teens
- 2. Maker Space
- 3. Group Study
- 4. Library of Things
- 5. Washroom
- 6. Staff
- 7. Electrical
- 8. Mechanical
- 9. Storage



2

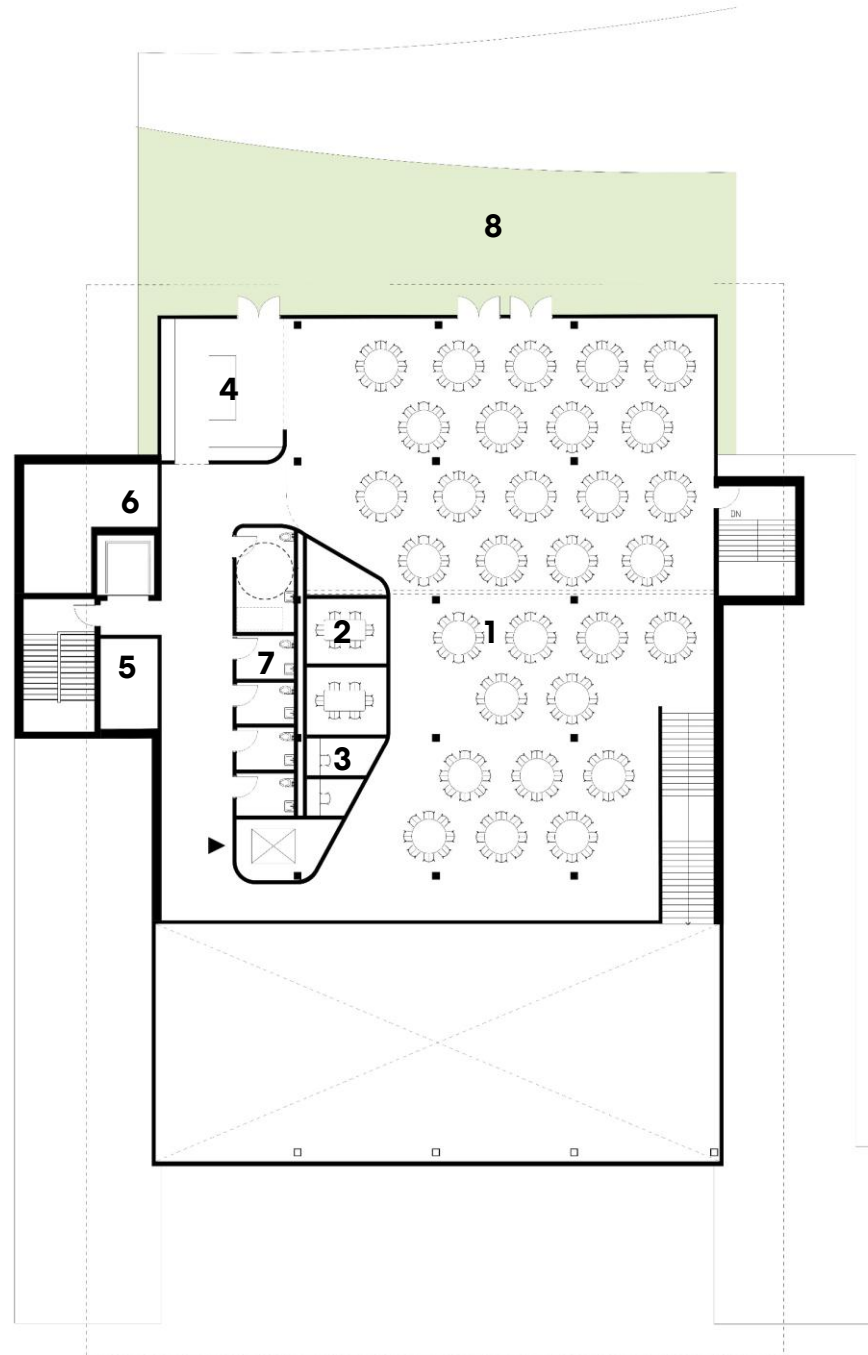
# Floor Plan – Level 02



- 1. Adults
- 2. Staff
- 3. Individual Study
- 4. Group Study
- 5. Washrooms
- 6. Roof Terrace



# Floor Plan – Level 03



- 1. Event Space / Study
- 2. Group Study
- 3. Individual Study
- 4. Kitchen
- 5. Storage
- 6. Mechanical / Electrical
- 7. Washrooms
- 8. Roof Terrace



## View from Church



**View from Church and George**



**View from Randall**



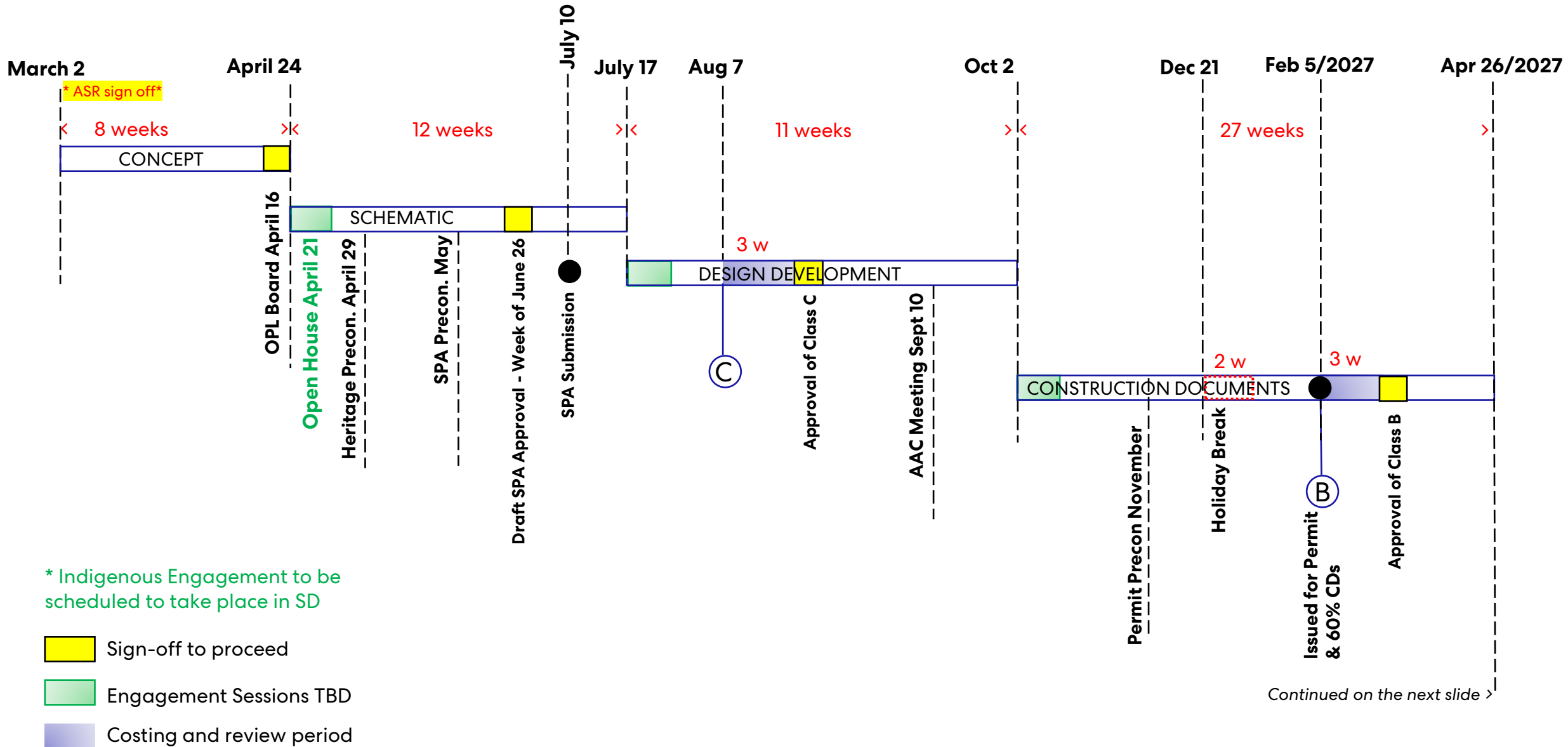
# View from Randall and George



**View from Randall and George**



# Project Schedule



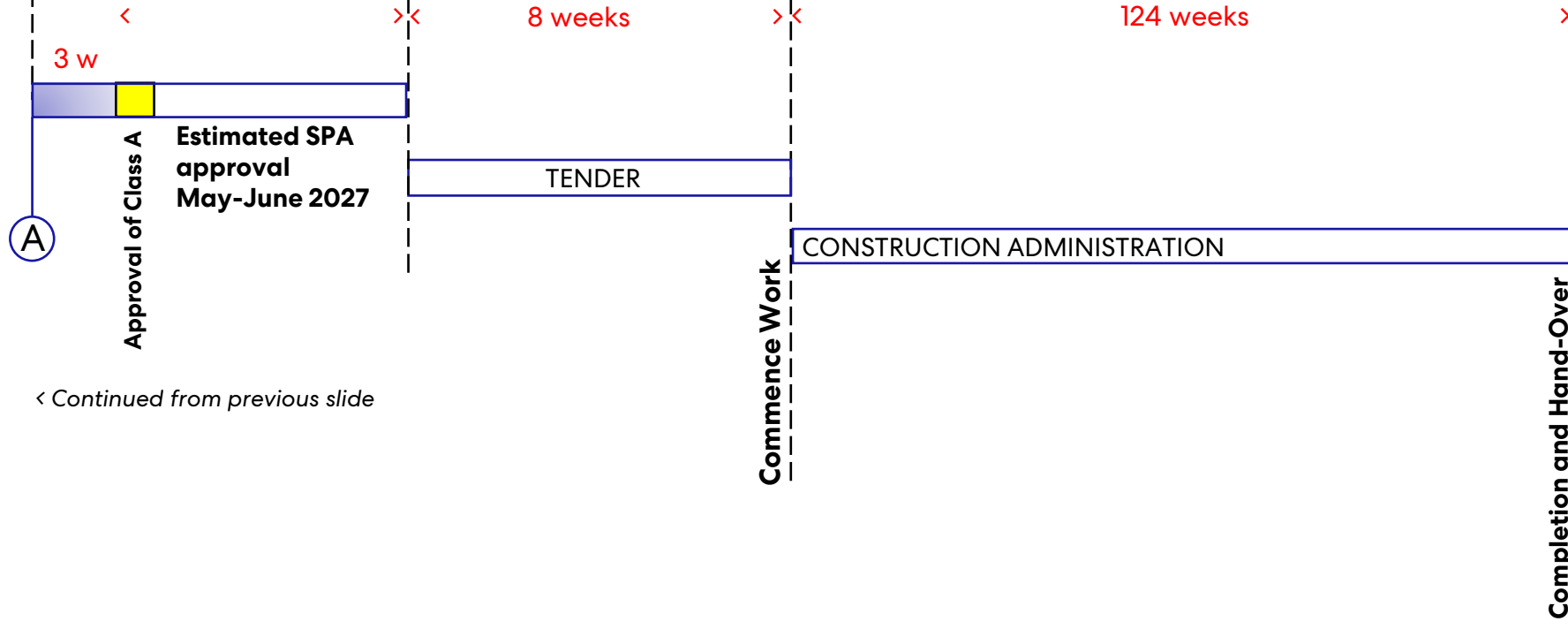
Continued on the next slide >

Apr 26/2027

July 2027

October 19, 2027

February 26, 2030



< Continued from previous slide